





Dartmouth Park Road, Dartmouth Park NW5

A beautifully presented three/four-bedroom family house with an architect designed kitchen and dining room extension, opening onto an attractive town garden.

Reception room • 3 bedrooms • kitchen/dining room • TV room/study/bedroom 4
• bathroom • shower room • loft storage • off-street parking for 1 car
• EPC Rating E

The two storey Arts & Crafts house is very well-located for The French Bilingual College of London; while the village like atmosphere of Swains Lane, tennis courts and acres of open space of Hampstead Heath are literally on the door stop.

Gospel Oak London Overground Station is an approximate 5 minute walk, while the nearest London Underground Station is Tufnell Park (Northern Line), less than 0.5 mile.

£1,000 per week. Unfurnished.

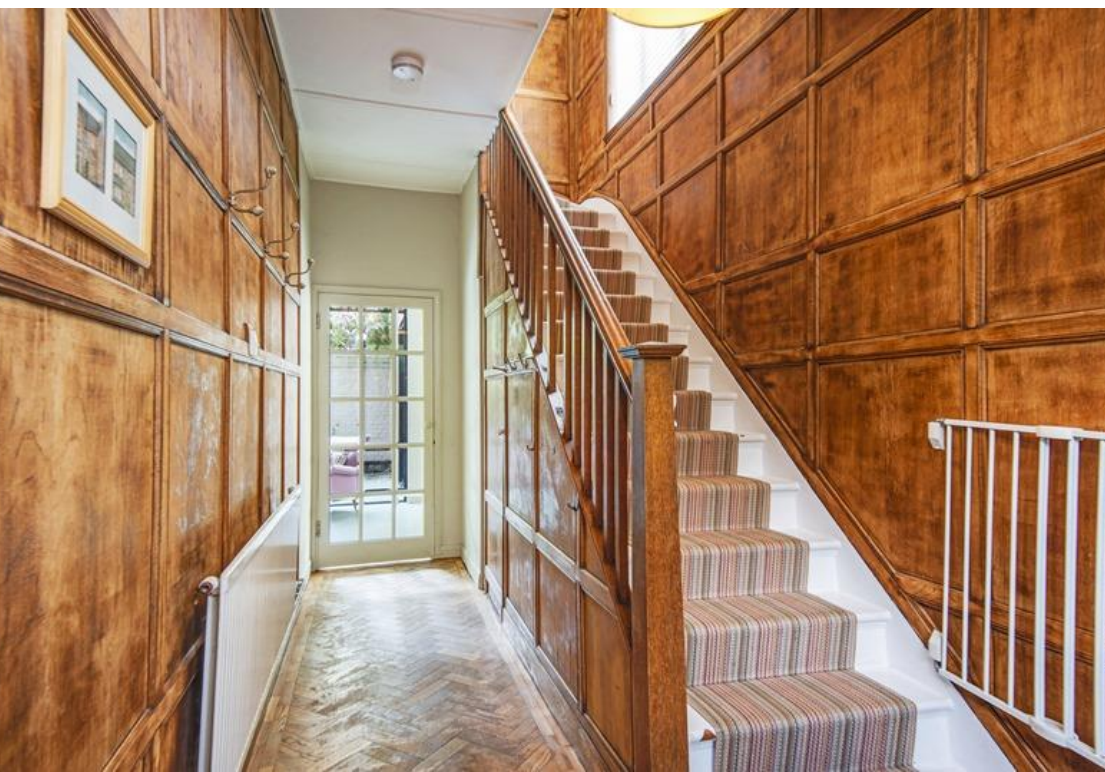
Telephone 020 7794 7794

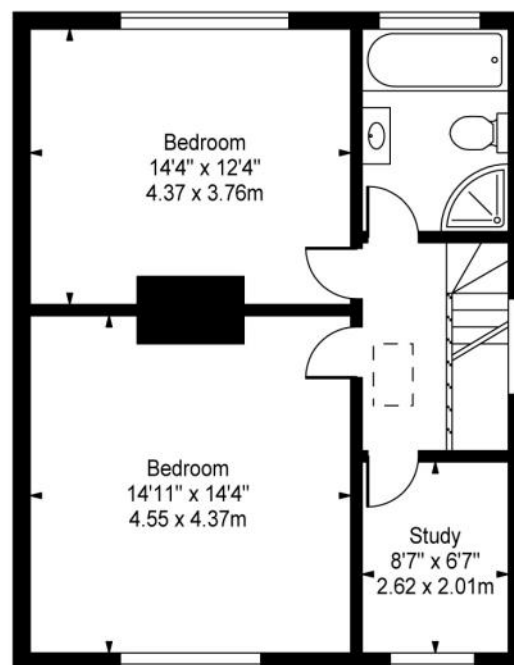
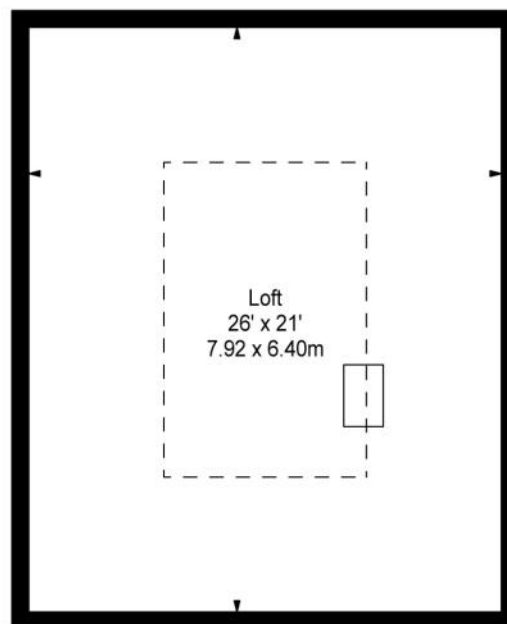
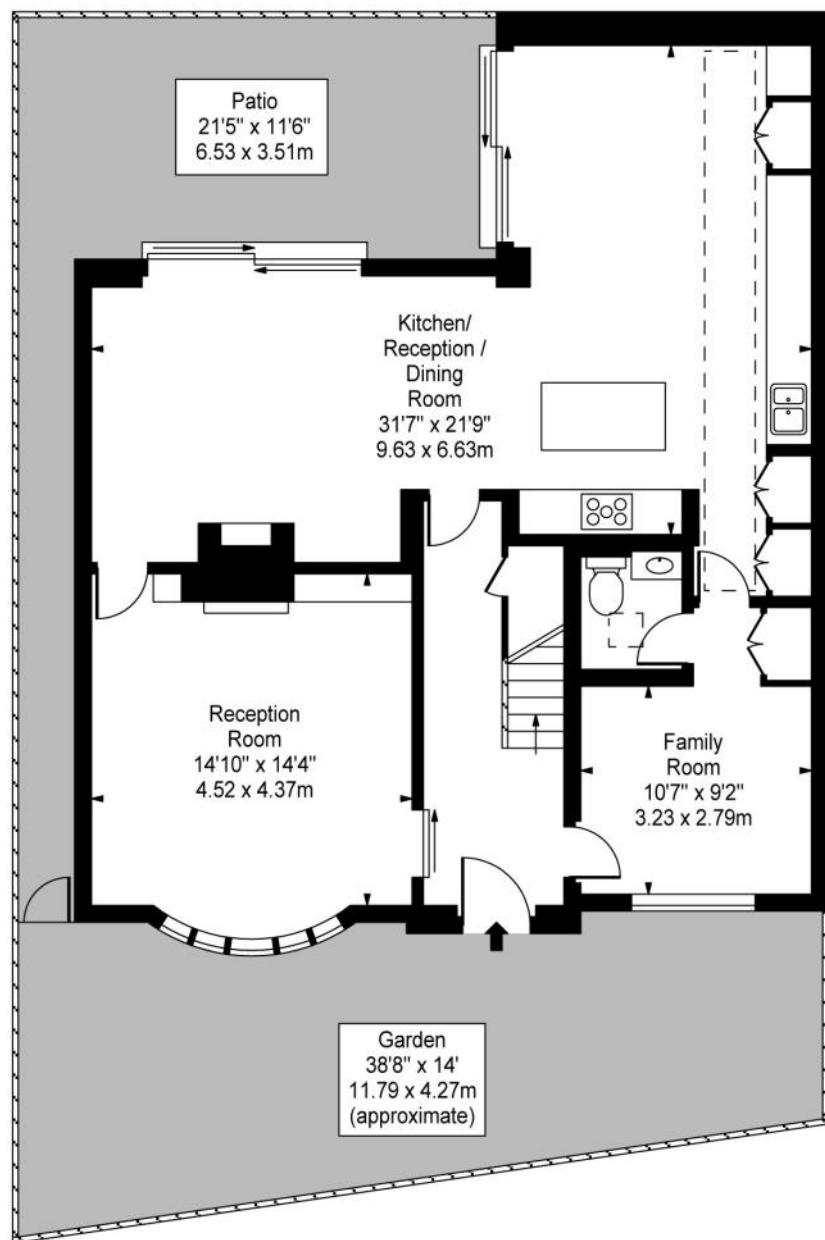












Approx. Gross Internal Area

2,170 Sq Ft - 201.59 Sq M

Including Restricted Heights

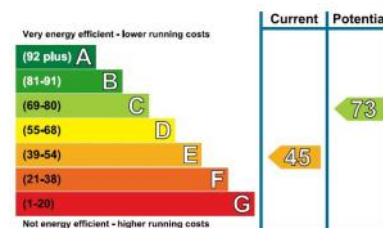
1,624 Sq Ft - 150.87 Sq M

Excl. Restricted Heights

For Illustration Purposes Only - Not to Scale - by Datagraphy

This floor plan should be used as a general outline for guidance only. Any intending purchaser or lessee should satisfy themselves by inspection, searches, enquiries and full survey as to the correctness of each statement. Any areas, measurements or distances quoted are approximate and should not be used to value a property or be the basis of any sale or let.

Energy Efficiency Rating



Telephone 020 7794 7794

